

YEAR 2015

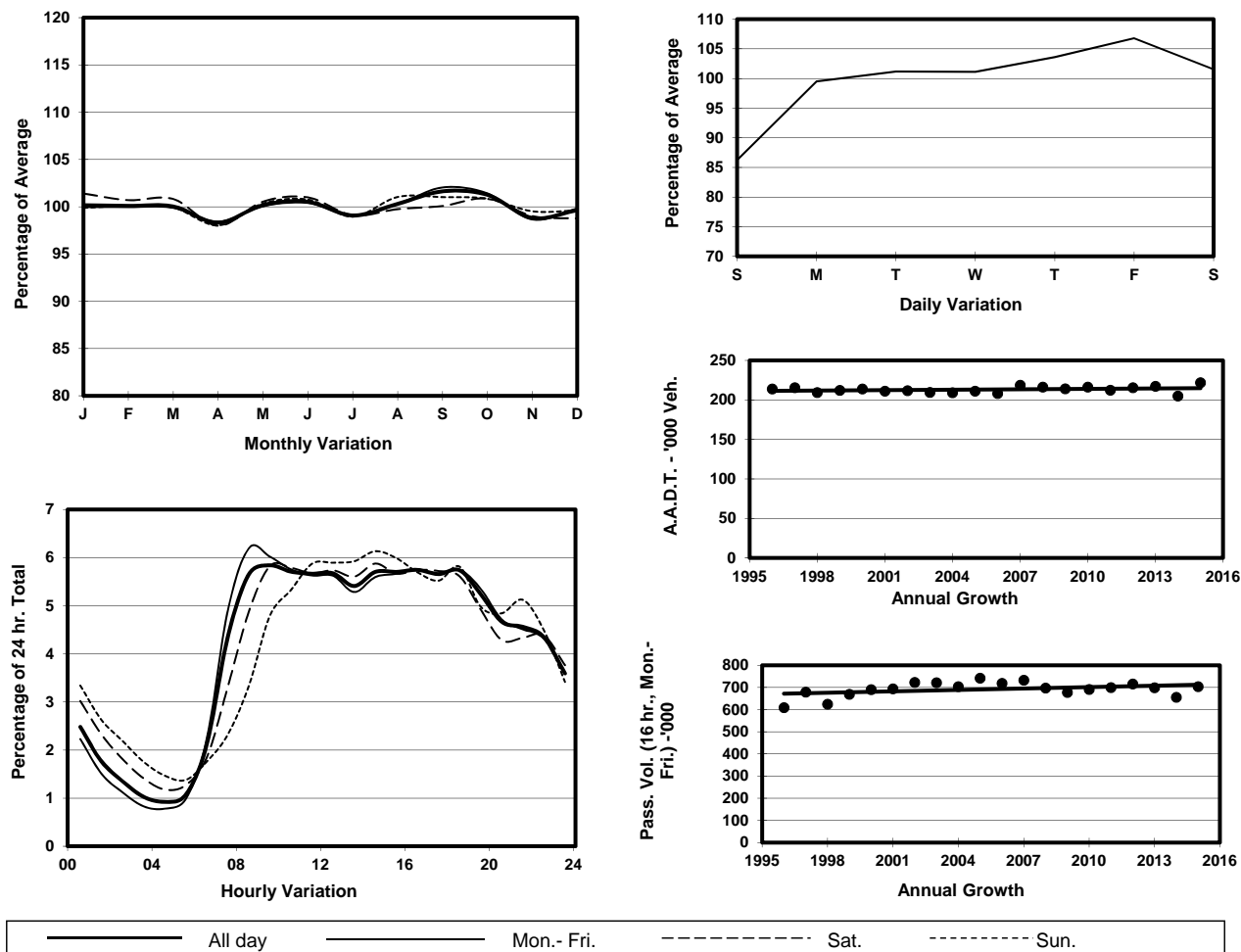
Location

Screenline G-G(East end of Causeway Bay)

Stations on Cordon/Screenline

1002, 1107, 2204 and 2214

1. TRAFFIC FLOW VARIATION AND GROWTH



2. TRAFFIC CHARACTERISTICS (BY DIRECTION)

Parameter	All - Day	Mon. - Fri.	Sat.	Sun.
EAST BOUND				
A.A.D.T.	111330	114390	113060	100070
R 12 / 24 - %	64.9	66	62.5	61
R 16 / 24 - %	85	86.3	81.5	81.6
AM Peak Hour	0900-1000	0800-0900	0900-1000	0900-1000
One-way flow at AM peak hour	5940	6610	5730	4520
T - % (AM)	-	10.9	-	-
PM Peak Hour	1600-1700	1600-1700	1600-1700	1600-1700
One-way flow at PM peak hour	6540	6740	6510	5940
T - % (PM)	-	10.4	-	-
Prop.of commercial vehicles - 16 hr.	-	10.3	-	-
WEST BOUND				
A.A.D.T.	110540	114600	114090	92550
R 12 / 24 - %	68.8	69.6	68.4	64.4
R 16 / 24 - %	86.3	87.1	85.2	82.5
AM Peak Hour	0900-1000	0800-0900	0900-1000	0900-1000
One-way flow at AM peak hour	7020	7580	7500	4710
T - % (AM)	-	11.3	-	-
PM Peak Hour	1800-1900	1800-1900	1700-1800	1800-1900
One-way flow at PM peak hour	6450	6690	6560	5510
T - % (PM)	-	9.7	-	-
Prop.of commercial vehicles - 16 hr.	-	10.1	-	-

3. OTHER INFORMATION AND COMMENT

4. Vehicle classification and occupancy - Monday to Friday

Time		Class of vehicle									
		Motor	Private	Taxi	Private	PLB	Goods veh.		Non	Fr. Bus	
		Cycle	Car		LB		Light	M & H	Fr. Bus	SD	DD
0700-0800	Pro	3.4	33.7	31.3	4.0	1.6	10.9	2.4	6.3	0.4	6.0
	Ocp	1.0	1.4	1.9	8.0	10.0	1.4	1.2	22.4	24.2	43.1
0800-0900 Peak Hour	Pro	3.1	49.5	26.8	1.4	0.9	7.2	2.4	3.2	0.2	5.3
	Ocp	1.0	1.4	1.9	6.6	11.8	1.5	1.3	15.3	18.9	51.1
0900-1000	Pro	2.5	42.7	24.8	0.9	0.9	17.1	3.4	2.1	0.2	5.4
	Ocp	1.1	1.4	1.6	2.1	8.7	1.5	1.3	11.5	16.8	30.6
1000-1100	Pro	2.1	36.3	31.4	0.7	0.7	17.7	4.2	1.8	0.2	4.8
	Ocp	1.1	1.3	1.9	4.1	9.1	1.5	1.3	11.7	15.6	24.9
1100-1200	Pro	1.9	38.3	28.2	1.4	0.5	19.7	3.6	2.1	0.2	4.1
	Ocp	1.1	1.3	1.9	2.9	10.2	1.5	1.4	6.9	18.7	26.2
1200-1300	Pro	2.1	39.6	29.8	1.4	0.6	16.9	3.3	2.1	0.1	4.1
	Ocp	1.1	1.4	2.0	6.8	7.7	1.4	1.3	12.5	17.4	24.7
1300-1400	Pro	2.3	41.8	26.9	1.4	0.8	16.6	3.6	1.9	0.2	4.4
	Ocp	1.0	1.4	2.0	3.6	6.6	1.3	1.2	9.5	20.1	26.3
1400-1500	Pro	2.3	41.3	26.9	0.9	0.5	18.1	3.5	1.8	0.2	4.5
	Ocp	1.1	1.5	2.0	1.8	8.4	1.5	1.3	9.0	13.6	24.2
1500-1600	Pro	2.0	42.6	27.0	1.7	0.6	16.2	3.2	2.3	0.1	4.3
	Ocp	1.1	1.4	2.0	7.1	10.9	1.4	1.3	10.4	16.2	25.2
1600-1700	Pro	2.9	42.9	25.4	1.9	0.7	15.4	2.1	3.5	0.1	5.0
	Ocp	1.0	1.5	2.0	3.9	9.2	1.5	1.2	10.1	18.0	26.4
1700-1800	Pro	3.3	48.1	23.2	1.4	0.7	13.1	1.7	2.5	0.2	5.6
	Ocp	1.1	1.4	2.0	4.1	11.7	1.4	1.3	10.7	18.8	34.2
1800-1900	Pro	4.3	47.9	27.6	0.4	1.0	8.5	1.0	2.8	0.2	6.2
	Ocp	1.1	1.5	2.2	1.8	12.9	1.5	1.2	14.0	18.4	44.1
1900-2000	Pro	2.5	54.3	28.0	0.1	0.6	5.7	0.8	1.9	0.2	6.1
	Ocp	1.1	1.4	2.1	2.0	12.8	1.6	1.3	8.3	14.2	35.3
2000-2100	Pro	2.8	42.8	40.0	0.1	1.3	4.1	0.8	1.9	0.3	6.1
	Ocp	1.1	1.4	1.8	2.0	8.3	1.3	1.1	19.2	9.3	25.7
2100-2200	Pro	2.3	42.5	43.7	0.1	1.1	3.3	0.2	0.7	0.3	5.6
	Ocp	1.1	1.4	2.0	2.0	8.5	1.4	1.5	2.9	5.7	23.6
2200-2300	Pro	2.9	40.3	45.1	0.1	1.2	2.9	0.6	0.5	0.3	6.1
	Ocp	1.2	1.4	2.0	1.0	8.5	1.5	1.9	2.5	5.5	25.6
16 hours	Pro	2.7	42.9	29.8	1.1	0.8	12.5	2.4	2.4	0.2	5.2
	Ocp	1.1	1.4	2.0	5.1	9.7	1.5	1.3	13.0	15.7	31.6

Legend

Pro. Proportion of vehicles in % (Sum may not add up to 100% due to figure rounding)*

Ocp. Average occupancy of vehicles including both driver and passengers*

M&H Medium and Heavy

* All traffic data are collected from combined bounds except for one way traffic